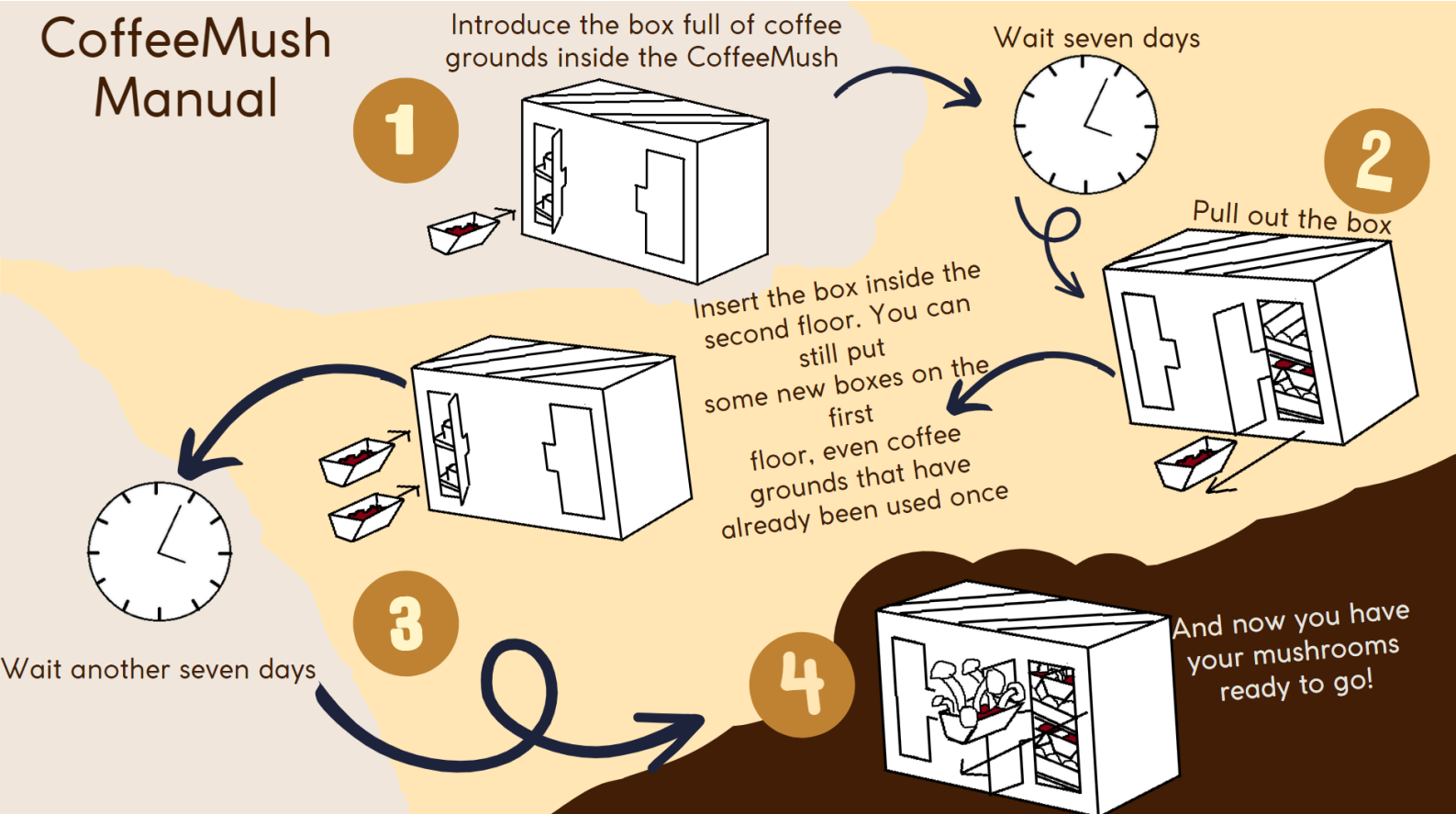


Manual user and app



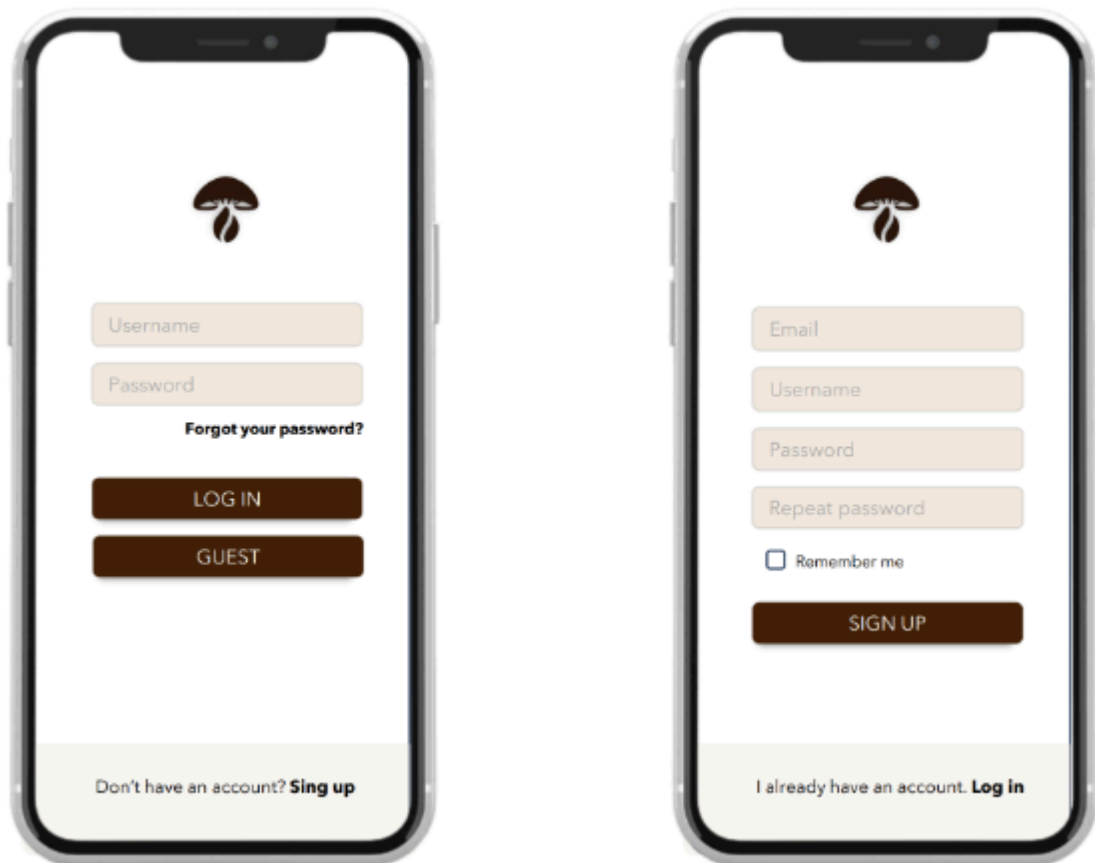
User Manual

CoffeeMush Manual



App manual

First download the CoffeeMush app on your store, then create an account. You can also log in as a guest.



Once you are logged in, you have to connect the application to his composter. This will be done by scanning the QR code on the composter. With the app and the composter connected, the home page will appear. From the home page it's possible to access to the box control, information, general statistics, and the camera. And as you can see on the last screen, from the circular icon on the top right, if clicked, it gives the option to disconnect. If clicking on "log out", the application redirects you to the first screen of all.



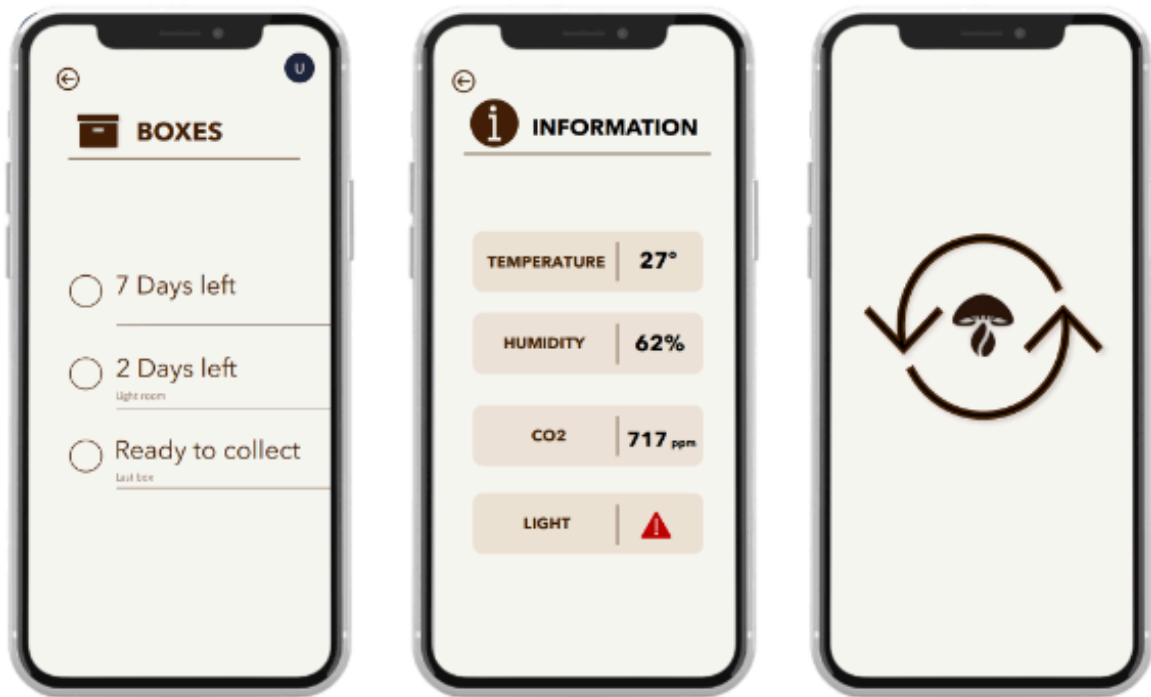
On the main screen, when clicking on the icons, the following happens:

From the “boxes” option, a screen is reached where it's possible to see how much time is left for the mushrooms to be ready. There is also the option to mark if they have been picked.

From the “information” option, a screen is reached where it's possible to see information about temperature, humidity, CO₂ levels and amount of light. In the case that any of the measurements are out of range, this will be displayed in red, as is the case with the light indicator.

From the “camera” option, by clicking on it, a real-time photo of the dark room of the composter will appear.

Finally, when the information is being loaded, the screen will look as shown in the screen to the right.



The application will also send notifications in case the mushrooms are ready (as shown in the first screen); and also in case it is necessary to regulate any condition of the composter, (as can be seen in the second screen).





CoffeeMush

Brew and renew, from coffee grounds to mushroom bliss!



Email: coffeemush@gmail.com



SCAN ME!

