

## **User Manual**

### CoffeeMush



# Index

Coffeemush Device .....3

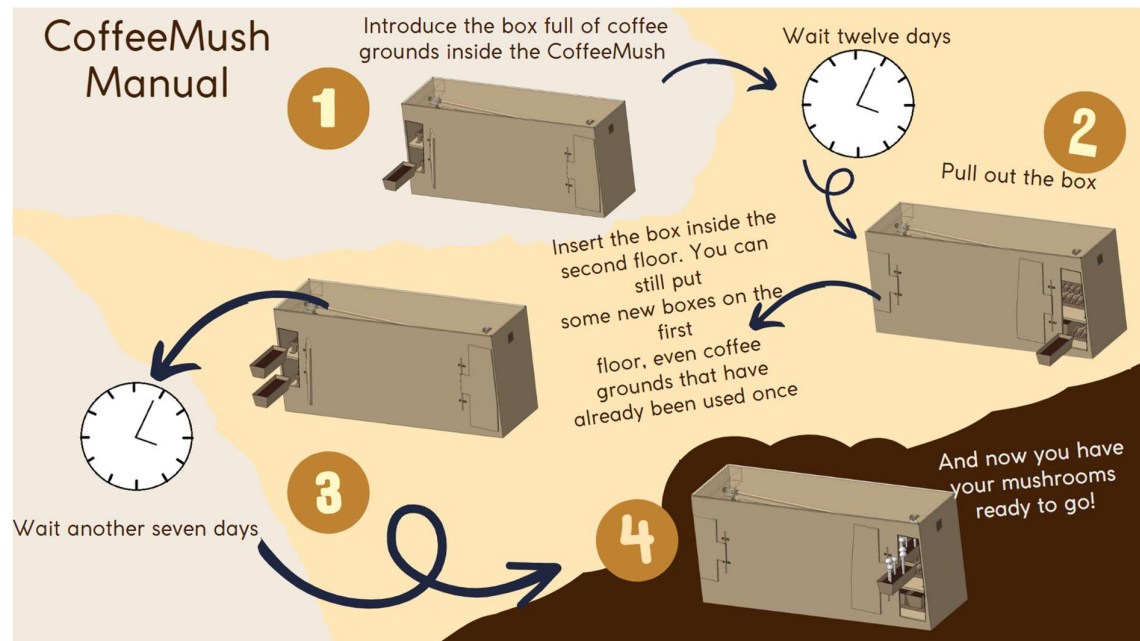
App Manual.....4

Safety instructions .....7

Warranty .....7

# Coffeemush Device

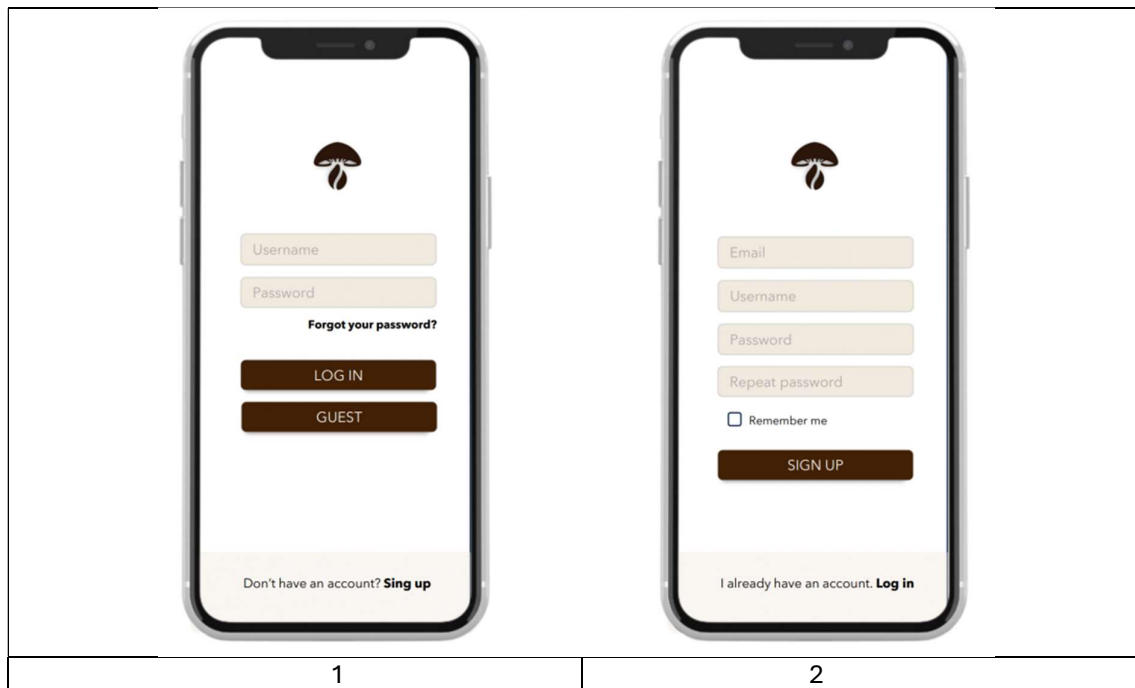
The following picture shows you how to use CoffeeMush in the simplest way possible, follow all the instruction on it to get your mushrooms:



# App Manual

CoffeeMush decided to add the utilization of an app for the costumer. This app has for purpose to get notification and to follow your mushrooms

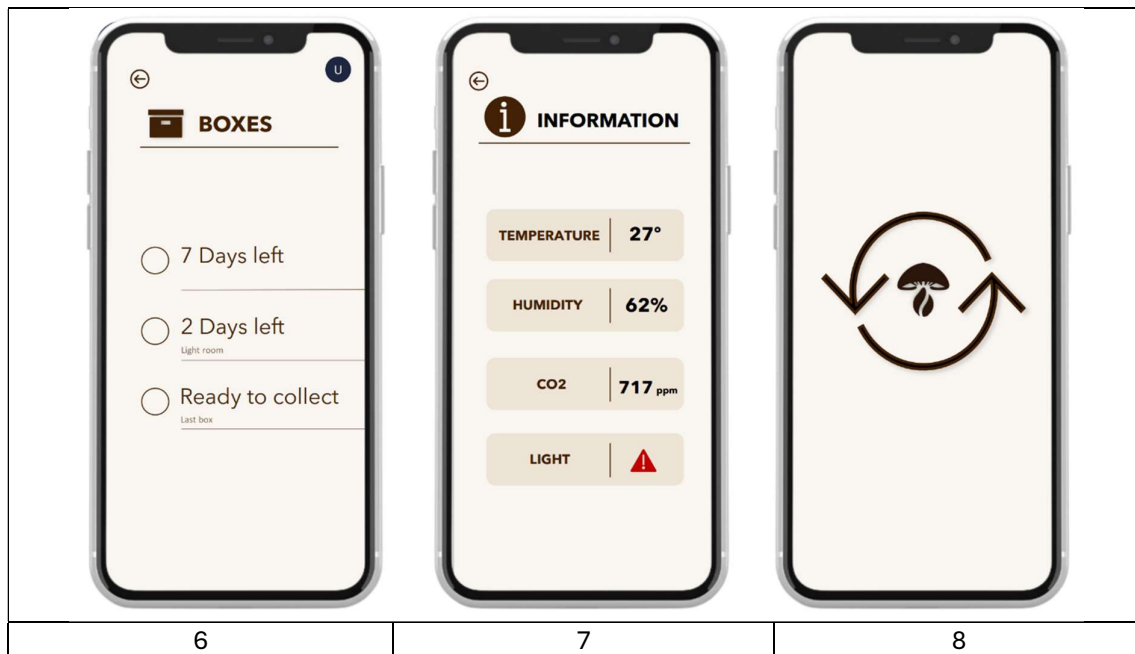
First download the CoffeeMush app on your store, then create an account. You can also log in as a guest



Once you are logged in, you have to connect the application to the composter. First this will be done by scanning the QR code on the CoffeMush. With the app and the composter connected, the home page will appear. From the home page (4) it's possible to access to the box control, information, general statistics, and the camera. And as you can see on the fifth image here, from the circular icon on the top right, if clicked, it gives the option to disconnect. If clicking on “log out”, the application redirects you to the first screen of all.



On the main screen, when clicking on the icons, the following happens: From the “boxes” option, a screen is reached where it's possible to see how much time is left for the mushrooms to be ready (6). There is also the option to mark if they have been picked. From the “information” option, a screen is reached where it's possible to see information about temperature, humidity, CO<sub>2</sub> levels and amount of light (7). In the case that any of the measurements are out of range, this will be displayed in red, as is the case with the light indicator. From the “camera” option, by clicking on it, a real-time photo of the dark room of the composter will appear. Finally, when the information is being loaded (8).



The application will also send notifications in case the mushrooms are ready (9); and also in case it is necessary to regulate any condition of the composter (10).



# Safety instructions

## Handling of the Equipment

1. **Use Gloves:** Wear protective gloves when handling the composter and organic materials to avoid skin irritation and contamination.
2. **Use a Mask:** Wear a mask to avoid inhaling mushroom spores or coffee dust.
3. **Handle with Care:** Move the composter carefully to avoid spilling the contents.
4. **Location:** Place the composter on a stable surface to prevent spills.
5. **Electrical Equipment:** Ensure that all connections are properly insulated and that the appliance is plugged into a grounded outlet.
6. **Monitor the Device:** Check the composter regularly for any abnormalities.

## Cleaning of Equipment

1. **Unplug Before Cleaning:** Always unplug the composter before starting cleaning to avoid any risk of electrocution.
2. **Wear Gloves and Mask:** Use gloves and a mask when cleaning to protect your skin and respiratory tract from organic residues and spores.
3. **Use Appropriate Tools:** Use brushes and rags suitable for the material of the composter to avoid damaging it.
4. **Cleaning Components:** Thoroughly clean all components of the composter, including bins, grates, and filters.
5. **Cleaning Products:** Use non-toxic, biodegradable cleaning products to avoid chemical contamination of the compost.
6. **Dry Completely:** Make sure all parts of the composter are completely dry before reassembling and using it again.
7. **Waste Disposal:** Dispose of cleaning waste appropriately, following local regulations on organic waste management.
8. **Regular Maintenance:** Perform regular maintenance on the composter to ensure its proper functioning and extend its lifespan.

# Warranty

Thank you for your interest in CoffeeMush!

What does this limited warranty cover?

This Limited Warranty covers any defects in material or workmanship under normal use during the Warranty Period. During the Warranty Period.

CoffeeMush will repair or replace, at no charge, products or parts of a product that proves defective because of improper material or workmanship, under normal use and maintenance.

How long does the coverage last?

The Warranty Period for Physical Goods purchased from CoffeeMush is 2 years from the date of purchase.

What does this limited warranty not cover?

This Limited Warranty does not cover any problem that is caused by:

Conditions, malfunctions or damage not resulting from defects in material or workmanship.

To obtain warranty service, you must first contact us to determine the problem and the most appropriate solution for you.

You can contact us at: [coffeemush@gmail.com](mailto:coffeemush@gmail.com)